

MINUTES

Meeting: Malmesbury Area Board
Place: Ashton Keynes Village Hall, Park Place, SN6 6NT
Date: 3 March 2020
Start Time: 7.00 pm
Finish Time: 8.30 pm

Please direct any enquiries on these minutes to:

Craig Player Democratic Services Officer, Tel: 01225 713191 or (e-mail) craig.player@wiltshire.gov.uk

Papers available on the Council's website at www.wiltshire.gov.uk

In Attendance:

Wiltshire Councillors

Cllr John Thomson (Chairman), Cllr Toby Sturgis (Vice-Chairman), Cllr Gavin Grant and Cllr Chuck Berry

Wiltshire Council Officers

Rhys Schell (Specialist Manager – Communities and Governance), Craig Player (Democratic Service Officer) and Dom Argar (Assistant Multi-Media and Graphics Officer)

Town and Parish Councillors

Dauntsey Parish Council – Di Wood
Great Somerford Parish Council – Sarah Binstead
Ashton Keynes Parish Council – Dave Wingrove
Minety Parish Council – Adrian Read
Brinkworth Parish Council – Martin Evans
Brokenborough Parish Council – Robert Tallon
St. Paul's Without Parish Council – Roger Budgen
Malmesbury Town Council – Kim Power

Partners

Wiltshire Police – PS Kate Smith and PC Rachel Davies
Health & Wellbeing Champion – Ellen Blacker

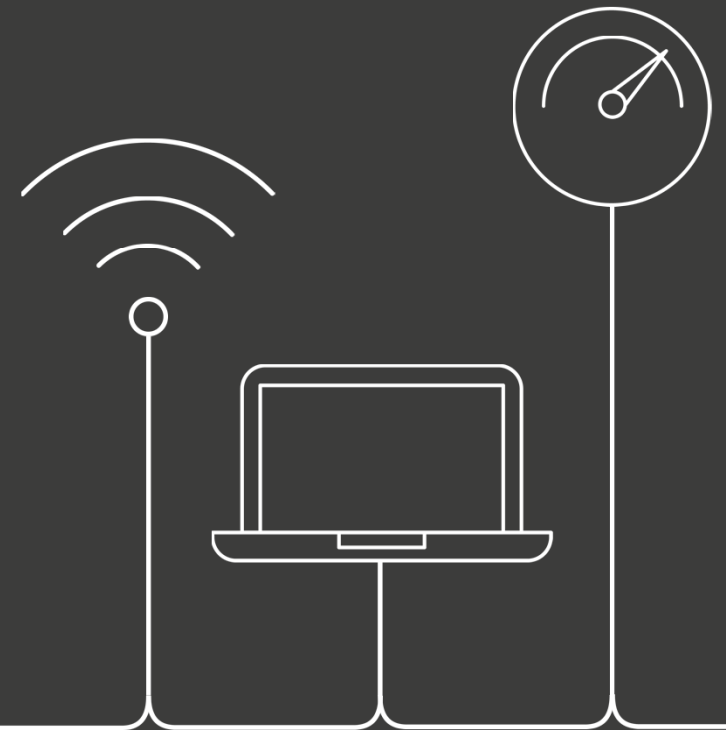
Total in attendance: 32

<u>Agenda Item No.</u>	<u>Summary of Issues Discussed and Decision</u>
16	<p><u>Chairman's Welcome and Introductions</u></p> <p>The Chairman welcomed everyone to Malmesbury Area Board and introduced Councillors and Officers present.</p>
17	<p><u>Apologies for Absence</u></p> <p>Apologies were received from Penny Bell, Malmesbury Community Engagement Manager and Darren Nixon, Dorset & Wiltshire Fire and Rescue Service.</p>
18	<p><u>Minutes</u></p> <p>The minutes of the meeting held on 28 January 2020 were approved and signed as a correct record.</p>
19	<p><u>Declarations of Interest</u></p> <p>There were no declarations of interest.</p>
20	<p><u>Chairman's Announcements</u></p> <p>The Chairman will provide information about:</p> <p>a) Families and Children's Transformation (FACT) Programme b) Community Governance Review Consultation</p>
21	<p><u>Blue Lights Update</u></p> <p>a) Wiltshire Police – the following points were noted:</p> <ul style="list-style-type: none"> • A report would follow the meeting and would be circulated to attendees and parish councils in due course. • Kate Smith was introduced as the new Sergeant for the Malmesbury area. • February and March had been typically quiet with a low number of crimes being reported. • There had been a few burglaries which had been or were in the process of being dealt with. • Other issues had been traffic, weather or domestic related. • Wiltshire Police remained committed to working and sharing information with Neighbourhood Watch schemes in the area. <p>b) Dorset & Wiltshire Fire and Rescue Service – the written update was noted.</p>

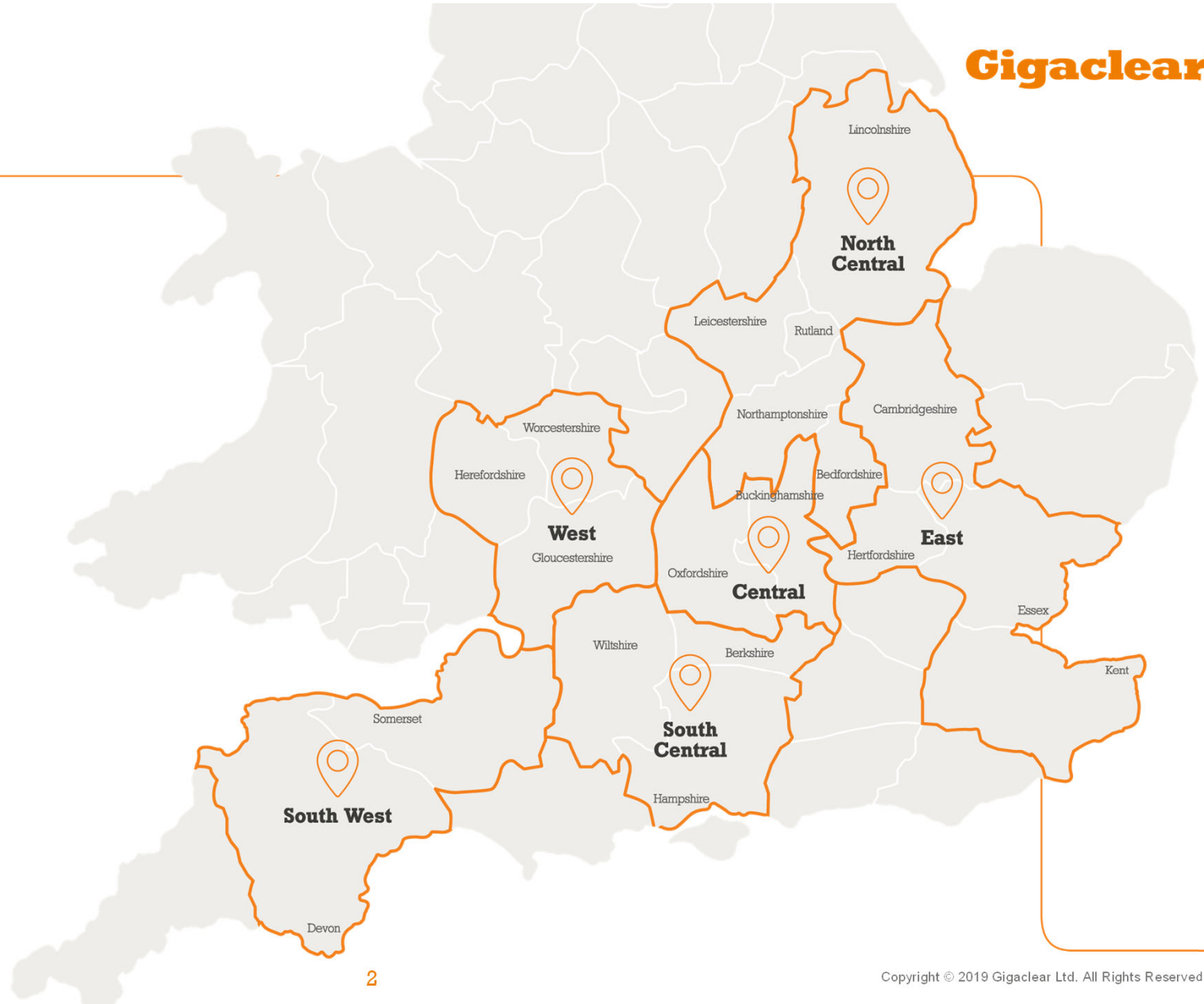
22	<p><u>Gigaclear Ultrafast Broadband Rollout</u></p> <p>Christopher Morris, Gigaclear's Community Engagement Manager, gave a presentation on the rollout of ultrafast broadband in the Malmesbury community area. The presentation is attached to these minutes.</p> <p>Matters highlighted in the course of the presentation and discussion included: an overview of what Gigaclear does; the regions it works in; what its objectives are; the areas in the locality in which work is ongoing; help and support available to local residents; the services and packages available; future plans and engagement with parish councils.</p>
23	<p><u>Malmesbury's Local Youth Network (LYN)</u></p> <p>Cllr Gavin Grant gave an update on the work and achievements of the Malmesbury LYN over the past 12 months and its priorities for the coming year.</p> <p>It was noted that the LYN had been successfully engaging with Malmesbury School, Police Community Support, the Youth Pastor, Riverside Centre and Malmesbury Town Council amongst other local groups. It had an active programme of work which included an after school drop-in service, outreach work and an LGBT+ group.</p> <p>It was also noted that Penny Bell, Malmesbury Community Engagement Manager, had developed a survey which was undertaken by over 400 young people at Malmesbury School. The Area Board had also held a meeting in the school, in which over 120 questions were received from its students. They had highlighted several key priorities, including the need for self-defence. The LYN had worked with a community-based provider to provide a class on self-defence in the school, which had attracted over 50 attendees.</p> <p>The Dyson Institute continued to enrol young people on its Apprenticeship Undergraduate Degree Course, which was facilitated by the University of Warwick. This was entering its fourth year and would see around 160 young people arriving into the local area, many of which had been and will continue to engage with Malmesbury School.</p> <p>It was noted that a sum of £500 had been awarded to Malmesbury Abbey for its Abbey Skate Project under delegated authority.</p> <p>Parish councils and community groups and organisations were encouraged to come forward with any further grant applications for youth funding.</p>
24	<p><u>Area Board Funding</u></p> <p>Consideration was given to four applications for community area funding.</p> <p>The Area Board also discussed ringfencing £7,700 of the 2020/21 health & wellbeing budget for the Health & Wellbeing Champion.</p>

	<p>Resolved</p> <ol style="list-style-type: none"> 1. To award Ashton Keynes Village Hall £1,781.40 for exterior lighting. 2. To award MVCAP £3682.02 for the Hello Network subject to match funding. 3. To award YMCA King's Road Nursery £2,500 for the Garden Project – subject to match funding. 4. To award Riverside Community Centre £500 for a new laptop. 5. To ringfence £7,700 of the 2020/21 health & wellbeing budget towards the Health & Wellbeing Champion.
25	<p><u>Partner Updates</u></p> <p>a) Health & Wellbeing Champion – the following points were noted:</p> <ul style="list-style-type: none"> • From April 2019 to February 2020 the Health & Wellbeing Champion had 130 clients, 32 of which were in Malmesbury. • 10 of these clients were into their 90s and 28 were under 60. • 91 of these clients were women, whereas 39 were men. • Overall, the Health & Wellbeing Champion had been in contact with 357 people. • Much work had done in pointing those in need to specialist advisors. • In supporting people to claim the benefits they were entitled to, people in the local area had become £40,000 better off. • £8,000 had been awarded in grant funding. • The Lunch Club continued to be successful and was now meeting at the Red Bull on Sherston Road. <p>b) Riverside Centre</p> <ul style="list-style-type: none"> • The Centre had recently signed a pledge to go single-use plastic free. <p>c) Healthwatch Wiltshire – the written update was noted.</p> <p>d) Wiltshire Clinical Commissioning Group – the written update was noted.</p>
26	<p><u>Urgent items</u></p> <p>It was noted that the application deadline for Auto-Speedwatch devices had now closed. Luckington Parish Council, Minety Parish Council and Oaksey Parish Council had all come forward. As the Area Board had only purchased two previously, the possibility of discussing a third was discussed.</p>

	Resolved To award up to £500 for the purchase of another Auto-Speedwatch device.
27	<u>Evaluation and Close</u> The next meeting of the Malmesbury Area Board will be held on Tuesday, 05 May 2020, 7.00 pm at Riverside Community Centre.





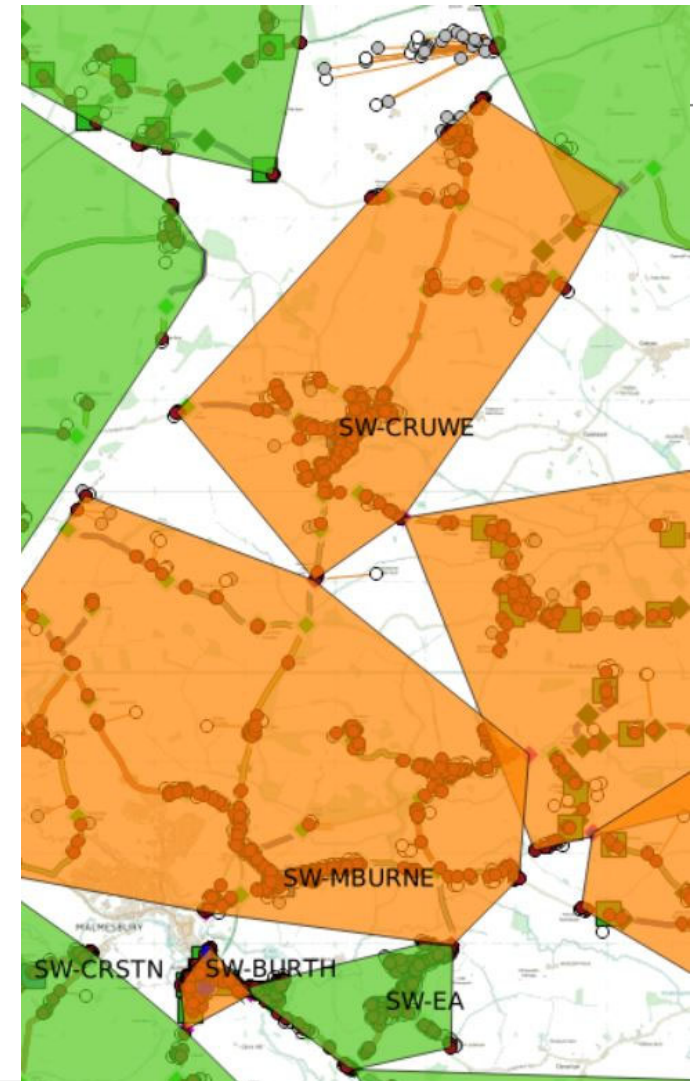


We build our networks with commercial investment and through the Building Digital UK (BDUK) scheme in partnership with local authorities, such as Wiltshire Online.

We plan, design and build the infrastructure necessary to bring full fibre broadband to the most rural communities.

Once built, we offer ultrafast broadband packages to residents and businesses so they can enjoy superior speeds – all day every day.

- Previously being handled by Complete Utilities.
 - Currently in the validation stage with our contractor Avonline.
- Page 12
- Crudwell has 139 of 485 connections built. 48% of trenching complete.
 - Milbourne has 28% of the trenching complete.
 - Current estimation is a Q2 possible start date.



- Frequent updates to both Hankerton and Minety Parish Council including the current programme of works. Road Closures in Q2.
- In build since Q4 last year. Estimated completion Q1 2021.





networkbuildcare@gigaclear.com

Page 14

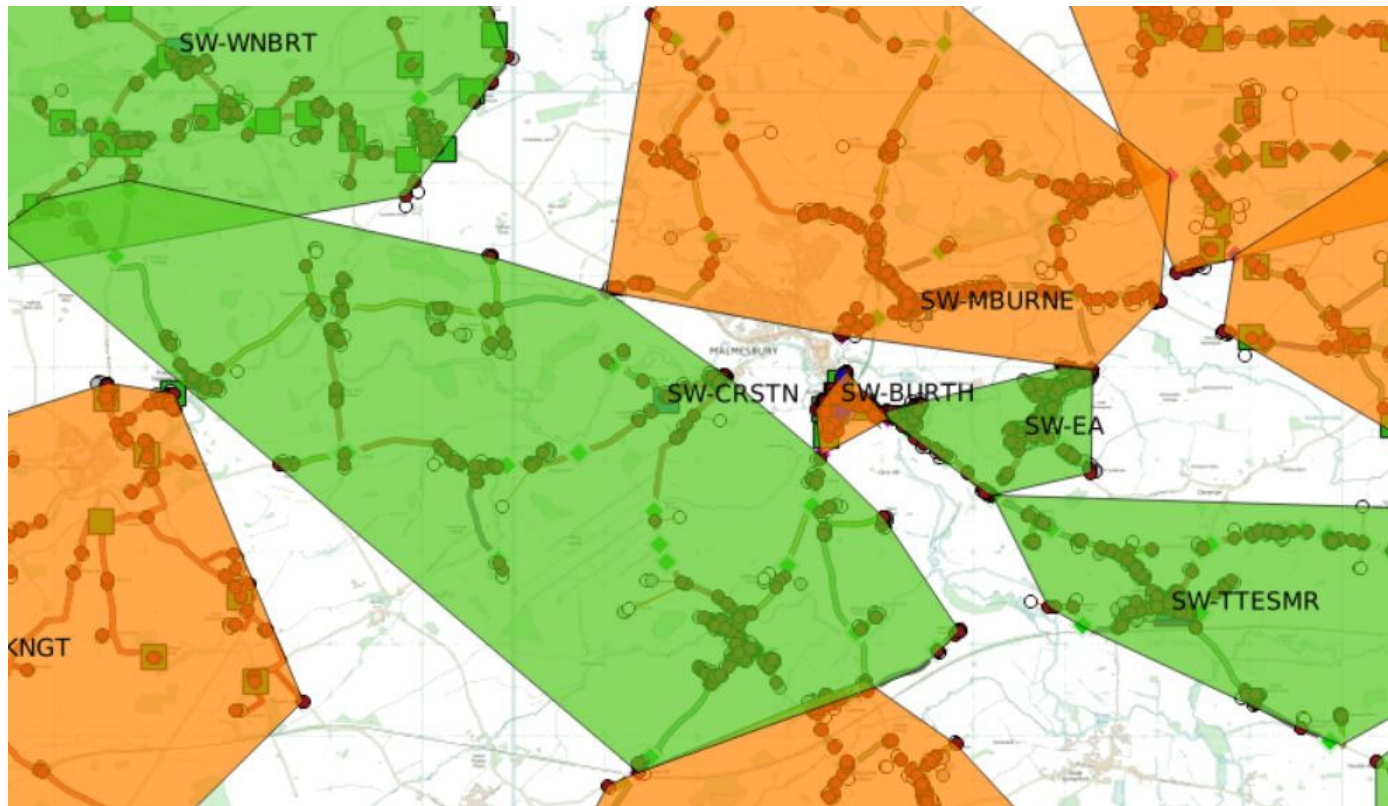


01865 591137

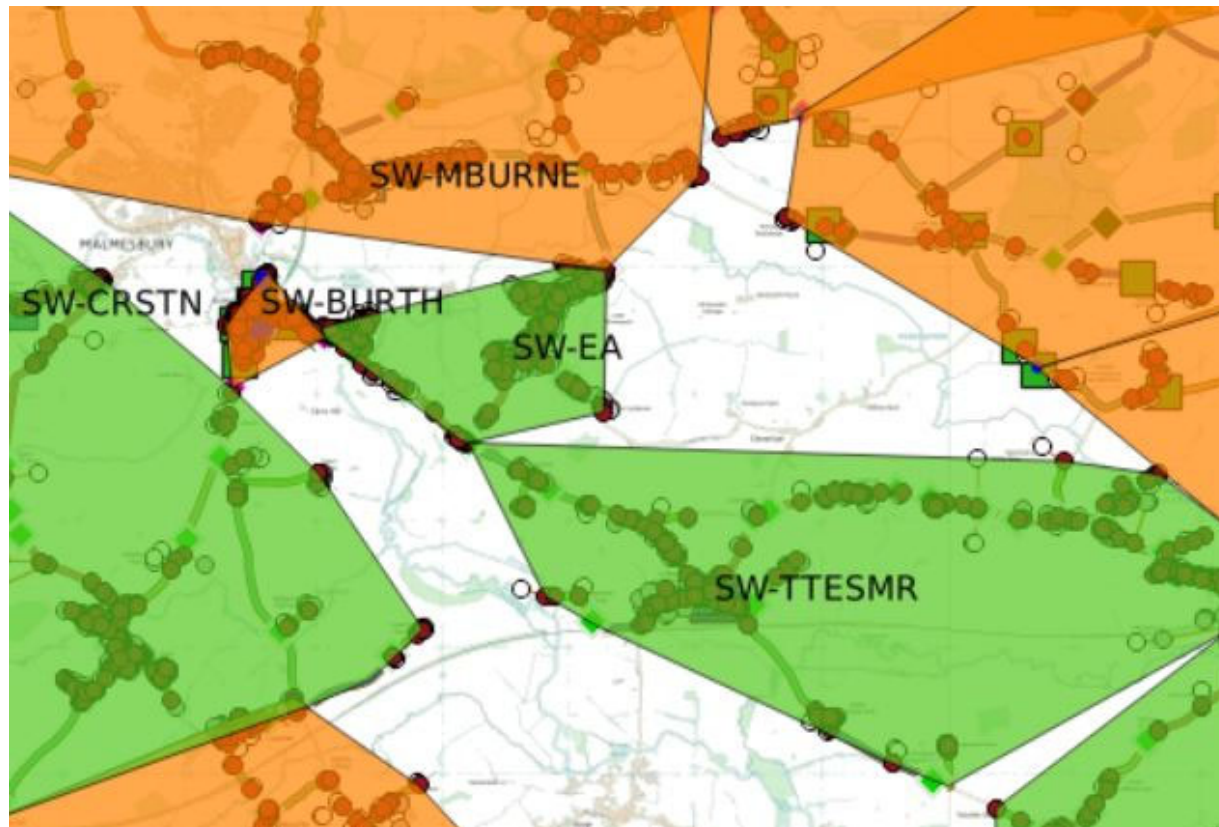


www.gigaclear.com

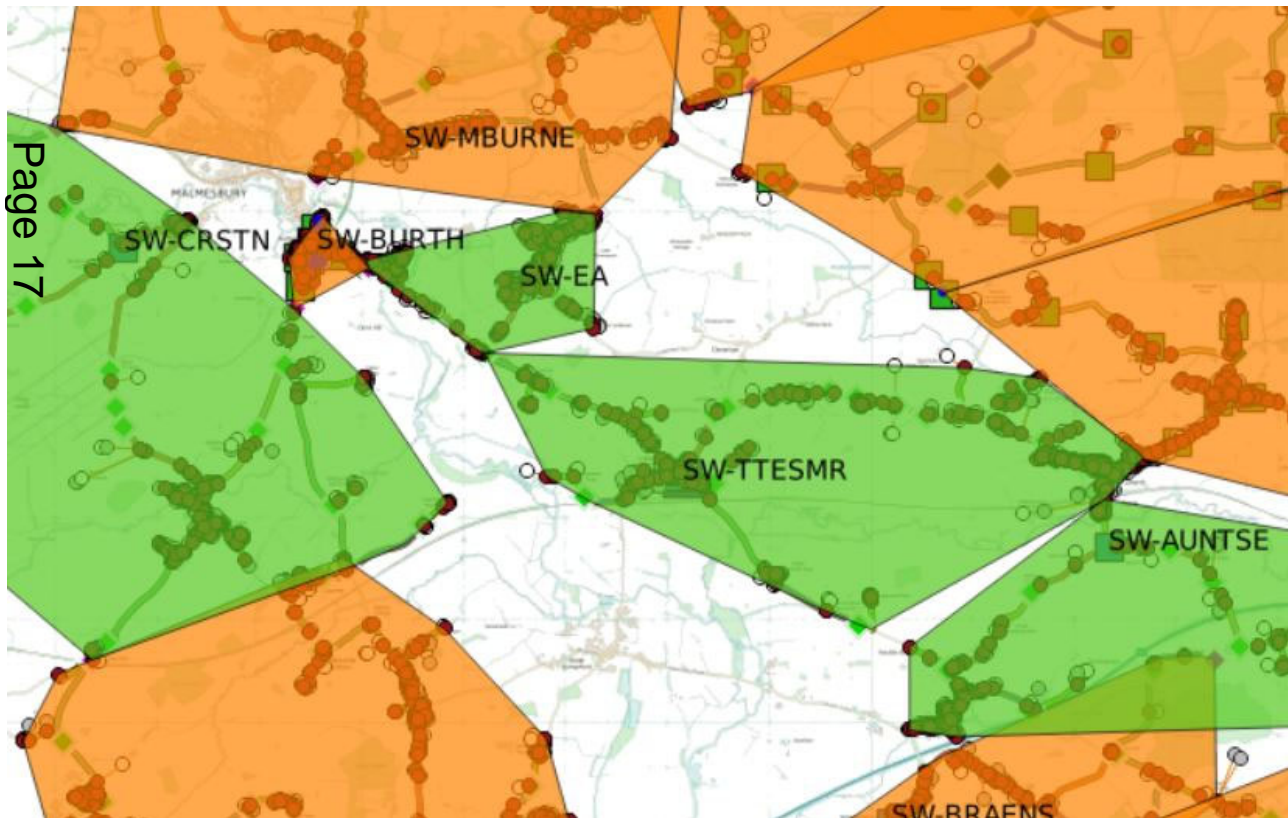
- 353 connections of 457 built. 77% of the trenching has been completed (30,000 meters of an estimated 39,000 meters).



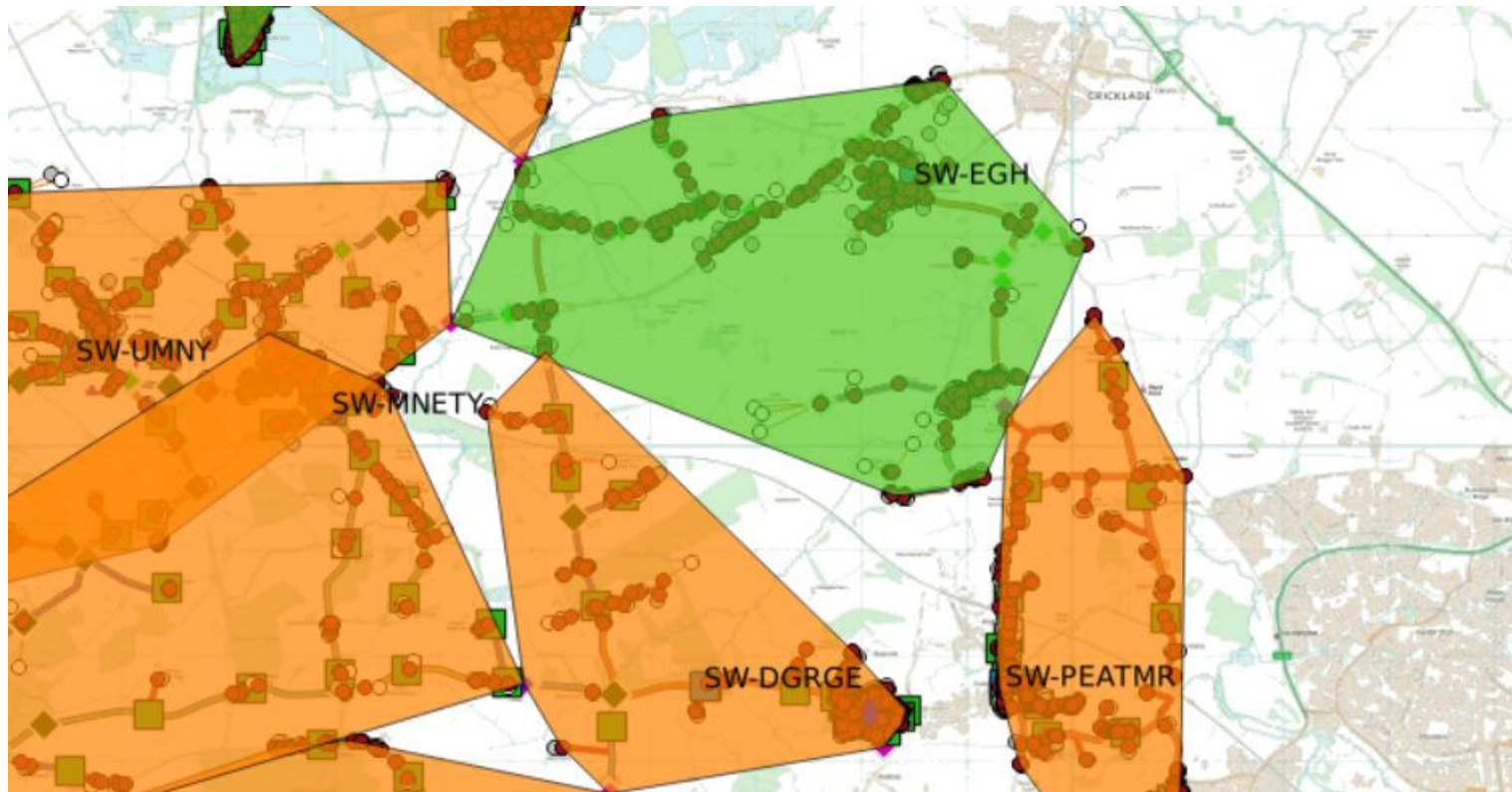
- 493 out of 497 connections built. 80% of the trenching has been completed.
- First activated in May of last year.



- 340 of 440 connections built. 87% of trenching completed.
- First cabinet in Wiltshire to be activated last April.
- Covers Little Somerford and Brinkworth (to Barnes Green, then Braydon.



- 316 of 441 pots built across the build. 62% of trench completed.
- Cabinet activated in December of last year.



- 182 connections built out of 204.
- Cabinet activated in November of last year.



ALL OUR PACKAGES INCLUDE:

- ✓ FREE standard installation
- ✓ £30 activation fee
- ✓ Unlimited usage
- ✓ Parental control
- ✓ No price increase during your contract
- ✓ Options for enhanced Smart WiFi

OUR PACKAGES

<p style="text-align: center;">Vxshuidvw63</p> <p style="font-size: small;">Ideal if you're a light internet user looking for a reliable connection and a seamless online experience.</p> <ul style="list-style-type: none"> • 30Mbps download average speed • 30Mbps upload average speed • Gigaclear powered by Linksys router <hr/> <p style="font-size: x-small;">"6<shuþ rþk</p> <div style="text-align: center; margin-top: 20px;">  </div> <p style="font-size: x-small; margin-top: 10px;">MESH READY</p>	<p style="text-align: center; font-size: x-small;">NEW</p> <p style="text-align: center;">Xouidvw433</p> <p style="font-size: small;">Suitable for a connected home with multiple users. Experience a high-quality connection with impressive speeds.</p> <ul style="list-style-type: none"> • 100Mbps download average speed • 100Mbps upload average speed • Gigaclear powered by Linksys router <hr/> <p style="font-size: x-small;">"77shuþ rþk</p> <div style="text-align: center; margin-top: 20px;">  </div> <p style="font-size: x-small; margin-top: 10px;">MESH READY</p>	<p style="text-align: center; font-size: x-small;">Most Popular</p> <p style="text-align: center;">Xouidvw633</p> <p style="font-size: small;">Perfect for making the most of your connection. A seamless ultrafast experience with our Smart WiFi included.</p> <ul style="list-style-type: none"> • 300Mbps download average speed • 300Mbps upload average speed • Gigaclear powered by Linksys router with Smart WiFi included <hr/> <p style="font-size: x-small;">"7<shuþ rþk</p> <div style="text-align: center; margin-top: 20px;">  </div> <p style="font-size: x-small; margin-top: 10px;">SMART WIFI WITH MESH TECHNOLOGY</p>	<p style="text-align: center;">K shuidvw<33</p> <p style="font-size: small;">The package that tops them all. Ideal for a tech-heavy household that wants the best speed and the ultimate online experience.</p> <ul style="list-style-type: none"> • 900Mbps download average speed • 900Mbps upload average speed • Gigaclear powered by Linksys router with Smart WiFi included <hr/> <p style="font-size: x-small;">":<shuþ rþk</p> <div style="text-align: center; margin-top: 20px;">  </div> <p style="font-size: x-small; margin-top: 10px;">SMART WIFI WITH MESH TECHNOLOGY</p>
--	---	---	---

Terms and Conditions apply. For more information, please visit www.gigaclear.com/backpage



To order your full fibre broadband package please visit
www.gigaclear.com/backpage
 or give us a call on
 34;98 744<;7



Traditional routers have limited range
 Many routers have limited range and may not achieve whole house coverage. WiFi speeds can be affected by many factors and the further away you are from the router the weaker the signal.

Extenders can add a bit more range, but they can reduce speed. Extenders provide greater coverage, but they can weaken your WiFi signal. Your device will switch between connections as you move around your home, meaning you may not always experience the best available speeds.



Smart WiFi for whole house coverage
 Smart WiFi with Mesh technology works seamlessly to provide reliable coverage. A family of interconnected nodes means you can move around your home and be confident that you'll always have the best available connection.

To find out more about our Smart WiFi packages please visit www.gigaclear.com/smart-wifi

NEED HELP CHOOSING THE PACKAGE THAT'S RIGHT FOR YOU?

Contact our dedicated sales team on 01865 411984 or email us at sales@gigaclear.com

sales@gigaclear.com



CHOOSE YOUR PERFECT BROADBAND PACKAGE

Transforming rural communities with full fibre broadband

Enhance your WiFi coverage with our modular Smart WiFi packages that are designed to fit the needs of any home.

Smart WiFi uses mesh technology to enhance your WiFi experience by increasing coverage and performance throughout your home with a series of interconnected nodes, ensuring you always have the best available connection.

Our Smart WiFi packages are designed to fit the needs of any home:

- Our Smart WiFi Starter provides typical coverage for up to a three-bedroom property.
- Our Smart WiFi Pro provides further coverage for up to a four-bedroom property.
- Our Smart WiFi Mesh provides enhanced coverage for up to a five-bedroom property.



If you need help finding the package that's right for you, please speak to one of our dedicated sales team members on 01865 411984 or email sales@gigaclear.com

ADVOCACY PROGRAM

1. Village Hub Scheme – Connecting the Heart of the Community

- Free connection to one village hub per community
- Four events per year
- On-site branding

Regular source of PR opportunities
 Dedicated landing page
 Online application and renewal process

2. Broadband Advocacy

- Registration referrals
- Community-focused incentives
- Dedicated landing page
- Information packs
- Regular source of PR opportunities
- Online application process



WIFI PASSWORD CARD



OUTDOOR SIGNAGE